

MCG NEWS

Newsletter of the Mendip Caving Group

Departure Lounge, Upper Flood (by Charlie Allison)

Number 350
June 2008

m-c-g.org.uk
mendipcavinggroup.org.uk

Founded 1954

Upper Flood Swallet updates

(adapted from the MCG Newsgroup messages of Mike Richardson, Ben Cooper, Tim Francis)

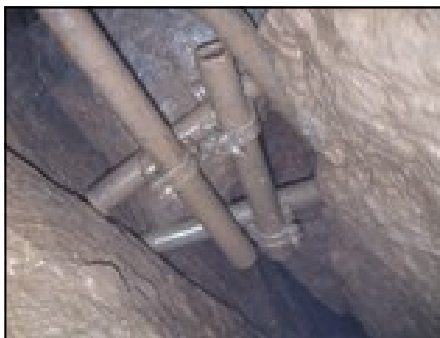
Collapse in Not Easy Squeeze

On **28/04/08** Mike Richardson, with Becca Lawson and Julian Todd (CUCC) entered the cave for a tourist trip with maybe a quick dig at Picket Pot, but only got as far as Not Easy Squeeze. Mike was backing along the rift to the drop to the boulder, thinking "this rock underneath me, I don't remember that" when he looked up and thought "I don't remember that very precarious rock". So he reversed quite quickly!

It looked like several rocks had fallen out of the roof at the same point where some had come in the last time the choke moved. A new large rock on the floor could be wobbled; if it had moved it would have blocked the hole above the rope climb; a few smaller pieces were sitting at the lip of the hole. Another rock was jammed above this - poking with a scaffold bar suggested it was not very tight. If it had fallen then the roof above would have been iffy.

The party had taken down two scaffold bars from the Red Room for Easy Squeeze, so they left these and returned to the Red Room to ferry back another bar, an Acro prop (which they freed up and cleaned), and picked up two clamps from Golden Chamber.

On **03/05/08** Tim Francis and Mike Richardson returned to the collapse in Not Easy Squeeze and made it safe by installing scaffolding (photo right, by M Richardson). The roof is stable now although the diggers might like to pop in a little more cement. People should still take care of course and perhaps not treat the scaffolding as a climbing frame.



(The boulders had always been somewhat suspect. But the cause of the collapse was an inexperienced caver on a trip several weeks earlier shoving his size-twelves in the roof. He repeated the trick on the way out and rocks were seen to move horribly when he braced.)

More leads found in West Passage

On **21/05/08** Mike Richardson and Ray Deazy undertook a West and East Passages tourist trip that ended up with new exploration. In East Passage, on the right-hand (southern) side of the passage a few metres after the deeper pool, Mike climbed up into a small rift, which entered a tube, adding another 10m of passage (once upon a time I guess that would have been something). He was stopped by mud bank, but could see about 3 metres ahead. There is no particular echo but not it is not totally dead either.

On the way out of West passage, beyond the chamber believed to be below Neverland, at a left/right joggle before Chuckle Choke, Mike checked the crawl behind the boulder. In the roof of the crawl was a narrow rift. He shoved up as far as he could go (Peat or Tim might make a few more inches). Shouting returned a really good echo. This must be the point where the passage up to the Pork Pies crosses over West Passage, so it might be worth a bit of attention.

From the Editor



I'm sorry you've had to wait for this newsletter – for the last three weeks I've either been away, or had people staying. But mostly there has been little to make a newsletter of - no articles, only Ben's survey and the reports on the Newsgroup about Upper Flood Swallet and Stainsby's Shaft (thanks lads).

I am thinking of re-introducing the monthly two-page Bulletins of years ago with membership news, the caving calendar, social events, and other important information. But I'll give it a bit longer to see how things pan out first.

Your newsletter needs you!

Yvonne

In this issue

- 1-2 Upper Flood updates
- 2-3 Upper Flood survey
- 4-5 Stainsby's dig updates
- 5 Roman Rake update
- 5 Dowsing Blackmoor
- 6-7 Upper Flood party
- 8 MCG doings
- 8 Hot water changes
- 9 Committee actions
- 9 New book - geology
- 10 Group information

Digging at Brian's Eye

On **07/06/08 Peat Bennett, Mike Richardson, Nick ?? and Tim Francis** attacked the dig at Brian's Eye (so-named because Brian Snell stumbled here in Oct 2006 and cut his eyelid, requiring stitches). They could clearly hear the streamway crashing below. There was quite a drip coming out of the roof and it was cold for those who were not at the dig face, which is now bigger and wider but only a little deeper. They had to cut back the rock slope a fair way as it was overhanging rather ominously. It looks a good prospect as it can not be much more than 30-40 feet above the stream. Water levels in Upper Flood Swallet were about average but they had a rude awakening at their return to the Lavatory Trap which was fuller than they had expected. The air in Midnight Chamber was 14°C, and the water was 15°C so they found it quite pleasant in the streamway.

Discovery of "Rift Series"

On **13/06/08 Ben Cooper and Mike Richardson** were surveying, starting at Royal Icing Passage, when they found Rift Series (a working title until the name is decided). They had surveyed almost as far as the deep pool, and had climbed up into a rift which Tim Francis (?) had originally inspected. They followed this to a Short Climb where the passage went left and back to Zebra Aven; to the right led to a passage which bent to the left. After a few metres a low crawl on the left connected back to the other side of the climb. At this point the passage was apparently blind, but they spotted a second low crawl a couple of metres on. Pushing through this they entered a walking-height passage. This extended for about 45m with a couple of grovels to meet a cross rift which closed down in both directions, around 5m to the right and 10m to the left. The air was generally quite fresh but suddenly become dead about 40m in. At this point there was an aven that seemed climbable to what might be a roof tube. Mike had a go but it was muddy and he was trying to keep his hands clean for surveying, so it still needs to be checked out.

Also, at the foot of the Short Climb mentioned above, they noticed a low crawl on the left. This heads back to the main East Passage, so might not be too interesting. Except that in the roof-level passage to Zebra Aven, at a bend in the passage, there is a narrow (couple of inches or so) slot in the floor which might be above the crawl at the Short Climb. This needs to be checked.

They achieved a very good agreement with Tim Francis and Richard Carey's centreline survey and managed a loop closure error of 0.3% - this is excellent. In all they surveyed 284m. Of this, only 46m had already been surveyed by Tim and Richard, so they have added 238m to the surveyed length of the cave. The brand new passage (working name: Rift Series, to reflect the complex nature of the intersecting rifts) is 57m long. The damp cross rift at the end is 4m lower than the East Passage terminal sump. There are still three known spurs to be surveyed (working names; Mike's Tube, Tube above Deep Pool, and Mike's Rift just after the Deep Pool). There is a low level spur, heading NE, not yet entered. There are two unclimbed avens in the "Rift Series". The first is just above the 3m climb, the second is in the new extension and has a visible tube.

Upper Flood Swallet survey updated

On the page opposite is Ben Cooper's revised version of the survey published for the BCRA (no new survey data have been added) addressing many of the comments received since then. Survex and Therion versions of the survey can be seen on the MCG Yahoo newsgroup where an extended elevation of the survey is also available in Therion format, based on the survey Left-Right-Up-Down (LRUD) data. These elevations need drawing up properly, and consequently, the elevations are not yet of publishable quality. Any comments / questions / requests would be gratefully received by Ben Copper.

The survey is also online at mendipcavinggroup.org.uk/sections/upperflood/surveys.html Thanks to Ben for making the data available and to Bill Chadwick for writing the code to display the results in Google Maps. Displaying the survey in this way means that it can be viewed at a high resolution but cannot easily be reproduced.

Bill is doing other work with Google Maps and Google Forms. You can now see the cave in relation to the surface at mendipcavinggroup.org.uk/sections/upperflood/surface.htm And all the digs and leads can be viewed at upperflood.googlepages.com/UfDigs.htm which is link-ed to Google Forms so that the diggers can update a spreadsheet online (using the link published on the Newsgroup) and see the results on the survey. Finally, if you have any photos of Upper Flood, pin them to the survey at upperflood.googlepages.com/UfPhotos.htm

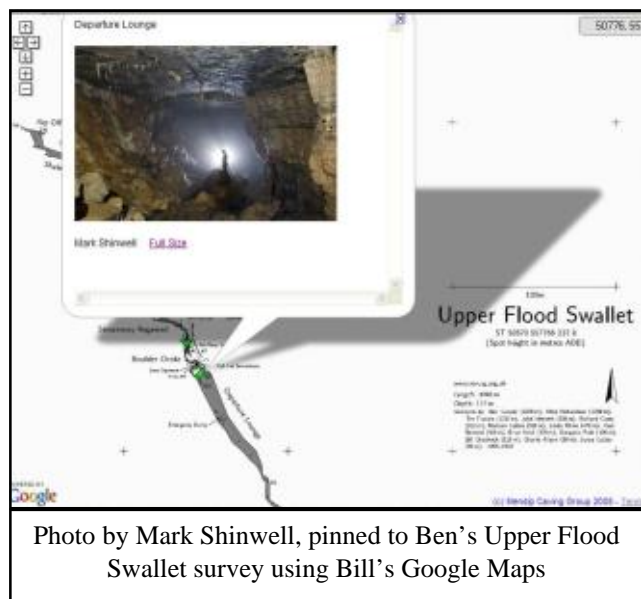
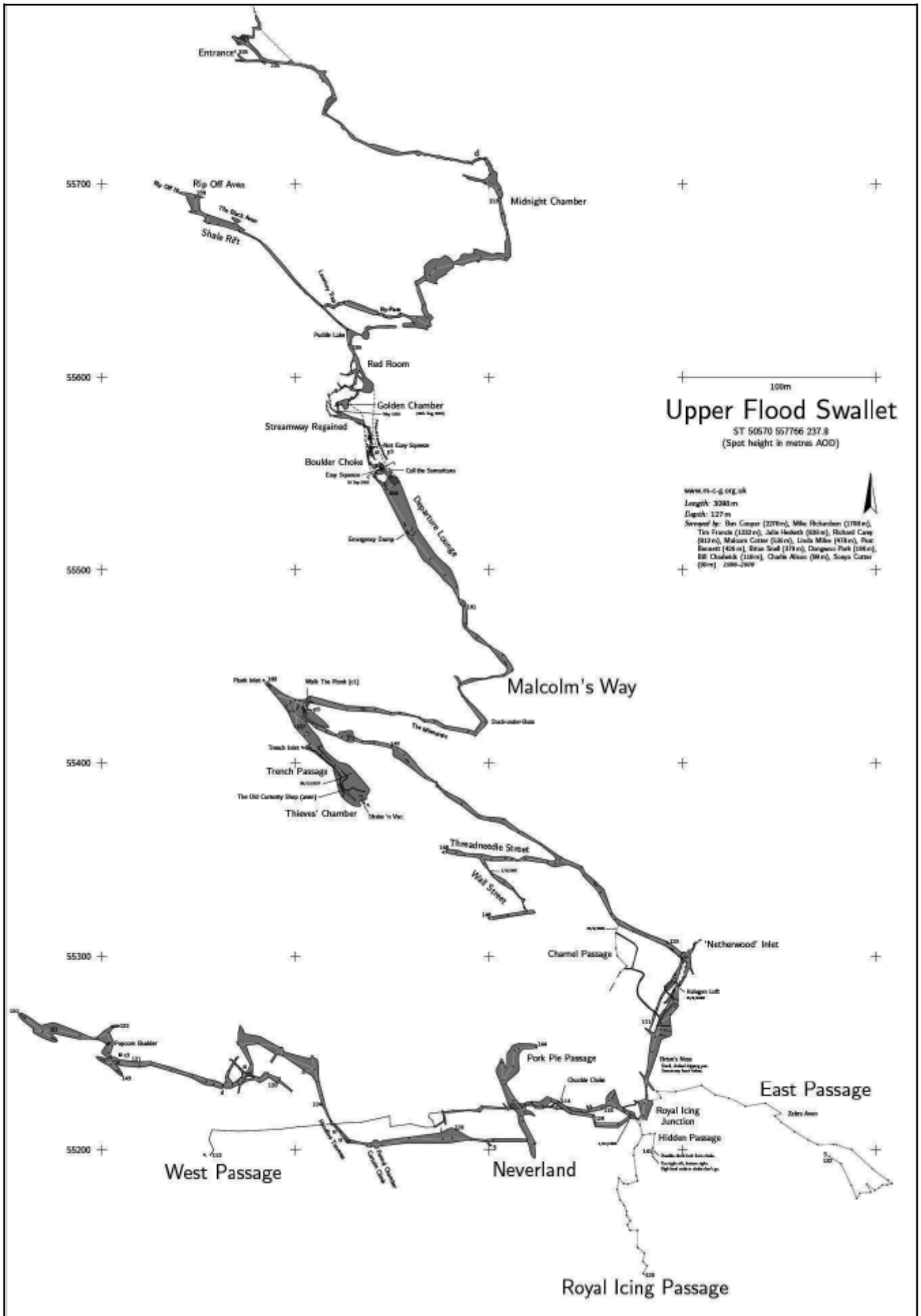


Photo by Mark Shinwell, pinned to Ben's Upper Flood Swallet survey using Bill's Google Maps



Stainsby's Shaft

(adapted from the MCG Newsgroup messages of Biff Frith and Mike Richardson)

Combination lock for use when digging

We've had a couple of incidents of Joe Public (and in one case Joe Public's dog and 3 year old daughter) wandering into the Stainsby's Shaft enclosure because the gate was left unlocked (allowing people to come and go to get gear, sneak off for a rest, stuff like that).

It was agreed that having a combination lock to use while digging would be a good idea. There is now one on the key board in the tackle store on the Stainsby's Shaft key. The combination is 1968 (the year of the Mendip Flood – it seemed appropriate and easy to remember). The idea is to put it on the gate while digging; when finished put the normal padlock back and bring the combination lock back to the MCG cottage.

Digging updates

An excellent day's digging was had on **19/04/08** despite there only being four diggers (**Biff Frith, Doug Harris, Mark Ireland, Mark Ward**). The obstruction in the ladder pitch was chemically persuaded to remove itself, as were many boulders below. The scaffolding was almost finished and a safe cage for digging was put in place. Many buckets of spoil were removed whilst the nail bar was lost in cavities measureless to man!

On **20/04/08** Sunday the digging was even better with a turn out of nine diggers (**Doug Harris, Mark Ward, Mark Ireland, Mike Richardson, Tim ?, Adam ?, Biff Frith, Ed ??, and Buddy ??**) They hit a deep deposit of layered soft clays, almost certainly buddle washings, that just kept on going down. These clays were easy to dig, the drums being filled faster than the winch team could keep up with, but it kept them fit! Over the weekend we deepened the shaft by 2.7 metres or 9ft. We plan to put in another stage of scaffolding before the May members weekend.

03/05/08 saw an excellent turn out (**Doug Harris, Mark Ward, Bill Chadwick, Giles Martin, Jeremy Gilson, Karen Fendley, Adrian Bell, Biff Frith, Mark Ireland**) as did **04/05/08** (**Bill Chadwick, Adrian Bell, Peat Bennett, Mike Richardson, Kev ??, Nicky ??, Ed ??, Buddy ??, Biff Frith**) Unfortunately Biff had to fit some scaffolding for safety and it took a long time. But they still managed to drop the floor another 3 to 4 feet before setting off to the Wessex Challenge but that's another story.

Everybody got a go at the dig face and barrels were coming out every few minutes. The shaft was dropped by another 6 foot or so making about 10 feet gained over the weekend. Peat managed to squeeze down into the rift seen from the end of the drafting excursion dug for the last month. He and the diggers could see each other's light confirming that they had gone around in a circle. "Diggers Folly" perhaps? We will be able to enter this rift soon but the way on is still straight down. This is easy digging, the way on being filled with soft mud and boulders, but it will need extensive scaffolding and mesh.

On **10/05/08** **Doug Harris, Mark Ward, Mark Ireland, Paul ??, Bill Chadwick, Adrian Bell, Karen Fendley, Russ Porter, Allan Wicks, John Evans, Biff Frith, Alan Grey** between them removed around 3 cubic yards of slimes out of the dig, that's over 3 tons in weight, to reveal a passage going for 12 feet towards the main shaft. The draught was coming in from the left hand side through a slot in boulders that Biff hiltied. This was big enough for Bill to squeeze up into a void but it was a no-go as it would have been detrimental to the continued existence of the digger if pursued.

11/05/08 was a case of where did they all go, as only 4 of Saturday's diggers (**Mark Ward, Paul ??, Biff Frith, Alan Grey**) turned up? Being made of sterner stuff than the others, they set off for another shift down the pit. Paul had the first go and found a slot going straight on in the right direction and dug this out as far as his arms would reach. Biff then hiltied it wider but this was slow-going as the rock was very tough. Alan then had a go at digging and opened up a descending slot going for 6 ft and draughting. He then had to go but suggested the other three should dig the floor out at the end of the passage. Mark got very excited when he hit void going down and onwards in the right direction. Biff had the last dig, going in head-first with Mark holding on to his feet so he could drag a large rock out. This revealed that the void goes on under the wall and appears to get wider, going down at 45 degrees, and draughting. The end can only be feet away from the main shaft.

Where does the sediment come from and when did it fill the shaft? It



Photos from 10/05/08 by Bill Chadwick

is around 15ft thick and the bands range from 1/2" to 2" thick. There may be 180 separate depositions. Progress has been made down and out of the slimes and is now producing stones and rocks. The voids underneath are clean-washed as if the slimes didn't get that far in. Was the shaft open to the surface and the miners used it as a convenient dump? It would also explain why there was air space in the top of the new passage and at the end of it there is a large void completely clean-washed going up about 8ft. And yes the digger will have to be on a lifeline soon (*Ed: a case of dope on a rope?*)

It was a hard day on **24/05/08** with just four diggers (**Mark Ward, Doug Harris, Bill Chadwick, Biff Frith**), but we almost got to the next bit of void after a lot of work shoring up the slime bank.

With a better turnout on **25/05/08** (**Mark Ward, Doug Harris, Bill Chadwick, Biff Frith, Mark Ireland, Adrian Bell, Kev ??, Nicky ??, Alan Grey**) it was possible to reduce a large rock to rubble and mine a bit more sludge, Biff was able to get in for another 8ft to what may be the main shaft. Unfortunately this was filled with rocks, but there was another void going left. After another boulder gave in to Mr Hilti, he was able to squeeze in. This took him back to the main rift wall where he could see down another 8ft and also back along the rift to almost under the digging shaft, almost completing a full circle. The rift (dyke) is undercut here thus creating the void (as predicted by Mark Ireland who had seen the same feature in the old dig).

After some discussion it was decided it would be safer and easier to continue going down the digging shaft. Within a few feet the rift wall started undercutting and void could be seen. They continued to dig for the afternoon until, tired and with various minor injuries taking their toll, we called it a day.

The digging shaft is now nearly 40 ft deep and a few hours will need to be spent putting in scaffolding. Once this is done we should be able to get in to the void. This must be close to the 18 fathom level and is in big blocks of limestone so hopefully it is still open. There is a good draft so prospects are good!

Roman Rake

(adapted from the MCG Newsgroup messages of Mark Ward)

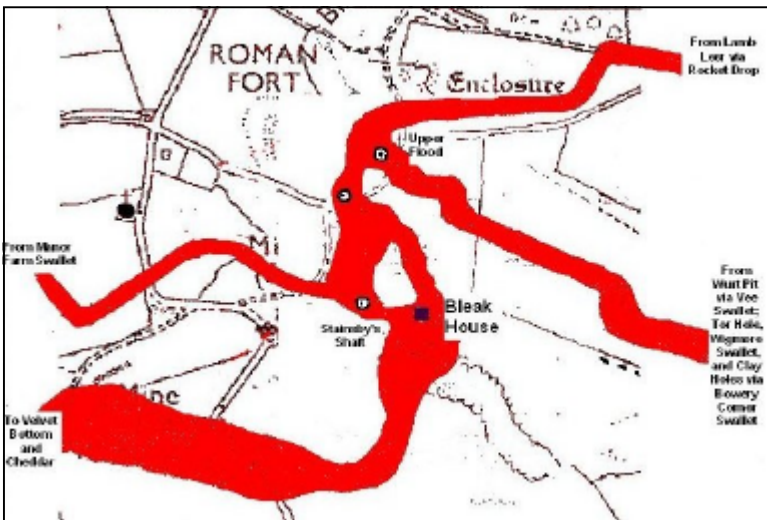
Following heavy rain and the floods on Mendip, what was left of the mud slide collapsed. The surface ground had been undermined, with only a few feet of earth, mud rocks and open cave. On **31/05/08** **Mark Ward** meshed and braced almost up to the surface and filled some of the void with rocks. This will need taking up to the surface to stabilise the ground. Never has such a small cave had so much scaffold...though all necessary.

On **04/06/08** **Mark Ward** dropped the floor 3 feet, back into the hole that he had originally dug in 2006 next to the (now gone) boulder. The 'orrible' sticky mud has gone and he is now back into the bang spoil. There are a lot of rocks that have to come up to be placed behind the mesh. The dig now needs rock nets ... and a strong pair of arms!

Dowsing in the Blackmoor Valley

While I was at the BCRA Technology Symposium in Mendip from 18-20 April I was able to repeat my 1987 exercise with Willy Stanton when he wanted the recently discovered Upper Flood Swallet followed by dowsing (see WPCST Newsletter 52, 22-23). I found the 2008 traces consistent with the previous work, and I have added some other traces from my work on the Cheddar catchment (Clay Holes for Tuska Morrison, Wigmore Swallet, Tor Hole, Bowery Corner Swallet, Rocket Drop, etc.). I talked with some MCG members and they expressed interest [in seeing the results]. My dowsing map of the Blackmoor area with some captions is shown in the diagram, below left. The Cheddar catchment really is extraordinarily large. I hope your members are interested, and I will answer any questions or do further work in Mendip with MCG if you wish.

Dr John D. Wilcock



Editor: Below, I have overlaid part of John Wilcock's dowsing map on Bill Chadwick's



Google Map at the same scale for comparison. Upper Flood is in yellow - look closely. The dowsing results, red, appear to cover much of the known cave passages. To view the images in greater detail, go to mendipcavinggroup.org.uk/sections/upperflood/dowsing

Happy 40th birthday, Upper Flood Swallet

During the evening of 10/07/68 a series of severe thunderstorms crossed the Mendips, an event most people on Mendip now refer to as "The Great Flood". Sadly, 6 people died locally as a direct result of the floods when nearly 7 inches of rain fell in 24 hours. The effect on Mendip caves was dramatic. Manor Farm Swallet collapsed producing a depression 60ft deep. A large mud flow entered G.B. Cave from the surface, blocking the terminal choke and overflowing into the Ladder Dig. In Longwood Swallet, flood debris blocked the routes into Great Chamber and August Hole. And most memorably of all perhaps, the old 40ft Pot in Swildon's Hole was bypassed when the flood waters re-excavated the fill that had been in the floor the Water Rift.

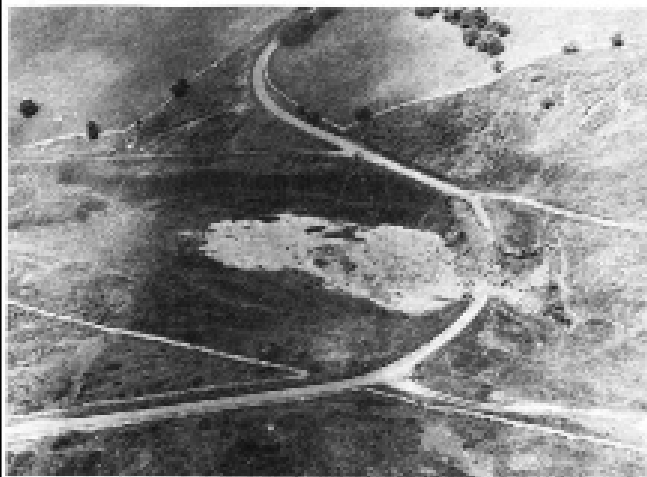


PLATE VII. Breaching of Charterhouse-Yoxter road, Blackmoor. Air Photo: Nicholas Ransington



PLATE IX. Destruction of minery spoil heaps, Velvet Bottom. Photo: M. D. Wilson



PLATE VIII. Installation of flood channel, Northwick. Photo: R. Agard



PLATE X. Grebe Swallet entrance. Photo: M. D. Wilson

45

Photos from WCC Occ. Pub Series 1 Number 2. Clockwise from top left: The breached road at Blackmoor; damaged minery spoil heaps in Velvet Bottom; Grebe Swallet; the new embankment under construction.

In the Blackmoor Valley, the Charterhouse-Yoxter road crossed the valley on an embankment with no culvert causing a huge quantity of water to pond behind this unintentional "dam". Eventually the water in the pond spilled over the embankment which then collapsed with catastrophic results, but not before the pressure of the huge head of water caused by the ponding had resulted in 3 new swallets being formed – Upper Flood, Middle Flood (Waterwheel) and Lower Flood (Grebe) Swallets. The entrance to Upper Flood Swallet was probably first entered, by Mendip Caving Group, when a tourist (Peter Anderson – where is he now?) drew the entrance to the attention of an MCG party who were digging at the nearby Middle Flood Swallet.

On **Saturday 05/07/08** we will be holding a **Birthday Party BBQ** at Nordrach Cottage to commemorate the Great Flood, and to celebrate the 40th anniversary of the discovery of Upper Flood Swallet.

Food: MCG will arrange the BBQ but please bring your own meat (or veggie equivalent). We will provide salads, coleslaws and baked potatoes as well as the birthday cake. There will be a small charge to cover the cost of these items.

Drink: Bob Templeman is celebrating his 65th birthday and is providing a barrel of beer (contributions to the cost would be welcome).

Entertainment: We'll definitely put up the MCG marquee and bring out the trestle tables. Please bring some 1960's music (CD format please!) and come in 1960's gear, even if it's just painting a flower on your face! So that means mini skirts, velvet and ruffles (a la Jason King), white boots, hippie gear, flower power, bobble hats!



Mendip Caving Group
Saturday 5th July 2008
from 7pm onwards

Summer barbecue
&
40th Anniversary of
Upper Flood Swallet

Come and join in a bit of a
celebration with a 60's theme

Don those kaftans, paint those
faces. Relive flower power and
kinky boots, psychedelia,
Beatlemania, and groovy gear...

Marquee - 60's Music - BBQ

MCG doings**Welcome to ...**

... two new Probationary members:

Adam Etherington

Angela Clulow

Mendip Convalescence Group?

Mick Norton was involved in a serious accident on 21/05/08. He was standing watching his drains being jetted when the man pulled the pipe out of the drain and it flew up hitting Mick in the throat. He was incredibly lucky that it did not cut his jugular or other vital bits. Mick had to be stabilized in the ambulance before they could take him to hospital. However, by 25/05/08 he was home again. He will not be doing much for a few months, as he has to avoid getting an infection.

Joan Goddard was taken ill on 16/05/08 and was hospitalised, but is now recovering at home.

We send them both our best wishes for speedy recoveries.

(Please note: Mike Richardson is now dealing with Cottage Bookings).

Hot water improvement - now "always on"

The committee asked me to re-configure the hot water electrics, and I did this on 14/06/08. I have re-configured it so that the top heater element is now always on during the day. Because its thermostat is set slightly lower, if no water is used during the day, it should never activate. This is because the cylinder is heated overnight on cheap-rate electricity to a high temperature by the lower element, and if no water is used, the cylinder should remain hot. However, if hot water is drawn off during the day, the top heater will automatically come on and keep the top part of the cylinder hot.

The booster still works, but now activates the bottom heater during the day. As before, the booster de-activates when the overnight Economy-7 kicks in. I recommend that on Members Weekends, or when more than a few people are staying at the cottage and using water during the day, the booster is activated as a matter of course in the morning. This will provide up to 6kW of heat to the cylinder (because both heaters will be active - double what we had previously), and this will maintain the entire cylinder at overnight temperatures. This should put an end to cold showers, except under very high demand when the higher power input should replenish enough hot water for a shower much more quickly than before.

For those interested, here are the details:

It took about 6 hours in all on Saturday (excluding trips to Wells). The job was bigger than I expected, because one of the fused outlets was cracked in two places, very charred and the red wire was completely blackened and brittle. I suspect it would have failed very soon. The flexible leads to the heating element were also completely shot - the blue insulation at the hot water end was broken, brittle and falling away. Again, it would have failed some time soon. These faults all represented fire hazards. So I ended up replacing almost everything. I think I had to prepare 17 cables ends!

I replaced:

- the master switch
- the metal box and the booster relay- the overnight relay housing
- both fused outlets (one was not fused, which was a fire hazard)
- both flexible leads (with 1.5mm heat resistance flex)
- all of the wiring, except for the 3-way cable from the booster switch, as it was in good condition.

I installed:

- A "consumer unit" with master breaker
- 2 x 16A and 1 x 6A circuit breakers
- New booster relay
- Re-used the night-time relay
- 2 x new fused switched outlets

I wired this so that:

- During the day the "night-time" relay powers the upper heater ("always-on")
- During the night, the "night-time" relay powers the lower water heater
- During the day, the "night-time" relay powers the booster control circuit (as before)
- The boost switch activates the booster relay (as before), which latches on
- the booster relay powers the lower water heater
- At night, the power to the booster relay is cut, and it switches off, as before

I will produce updated circuit diagrams for reference. I set the top heater thermostat lower than it was. It has no calibrations, so this will require some trial and error to get right.

All seems to be working fine. Any problems, let me know. The only thing I did not have were any suitable round cable clips for the 1.5mm 3-core flex lead. Could someone bring a handful and clip this to the wall? I'll also try to remember to bring some next time.

Ben Cooper

Earwig in on the Committee meeting held on 08/06/08

Electronic publications A link has now been added to www.m-c-g.org.uk to redirect traffic to www.mendipcavinggroup.org.uk. It was agreed that our package should be upgraded to include MYSQL/PHP to allow hosting of Bill Chadwick's Upper Flood Swallet electronic mapping.... **Fire alarm** It was decided to proceed with a professional installation, although negotiation of the price is required.... **Rescue tackle bags** The bags are old and should not be kept over the stairs as this may be considered a fire hazard. After disposal of any items not required, the bags will be put into the tackle store for general use.... **Fixed Aids** A list of all MCG-placed fixed aids is being compiled prior to agreement on an appropriate management policy.... **Broadband for Cottage** The current business line will be changed to a residential line once we know the payphone is compatible. We will then install wireless broadband.... **Upper Flood Swallet rescue kit** One of the drums will be brought out of UFS on the next available opportunity to replenish out-of-date items.... **Charterhouse Cave leader** Linda Milne has filled the vacant MCG post for a Charterhouse Cave leader.... **Heating and hot water** The committee decided not to proceed with a gas boiler to heat water for the showers. Instead, we will first try Ben Cooper's modifications (agreed at the AGM) to the immersion heating.... **Tackle Store** There is a lot of unwanted 'junk' in the tacklestore. This will be cleared out and unwanted items will be disposed of.... **Hidden Earth 2008** The theme for the MCG stand will be the history of UFS to mark the 40th anniversary. The stand will include more text and fewer photos, we will also take the squeeze box, UF T-Shirts to sell, the complete survey (A2 size to sell) and computers with the survey etc.... **Cottage Cleaning** A new vacuum cleaner will be purchased, cost £39

Mendips geological maps and guidebooks

The British Geological Survey (BGS) has published two brand-new geological maps and guidebooks featuring the Mendips. These new books, "A Walker's Guide to the Geology and Landscape of Western Mendip" and "A Walker's Guide to the Geology and Landscape of Eastern Mendip" are written for both tourists and local people who wish to know a little more about the region. They offer detailed geological maps of the area and a guidebook which describes the area's geology, landscape, flora and fauna. Understanding the local geology is key to finding out how the landscape came to look the way it does today, and how this influences everything from land-use to the local wildlife.



The books have been written by Dr Andrew Farrant, Project Leader and Regional Geologist at the BGS. Andy is also a well-known caver, and his article on the geomorphology of Upper Flood Swallet appeared in MCG News 339.

"Western Mendip" is an A5 book of 76 pages in full colour and is accompanied by a 1:25000 geology map of Mendip. At only £12.00 this is excellent value. There are sections covering all the major caving areas including Charterhouse and Blackmoor. Upper Flood Swallet gets a brief mention ("a major cave system with a stream") and even a photograph! The accompanying geology map is based on the Wells 1:50000 geology map sheet 280, with minor amendments and some simplification. It is designed to be used in conjunction with the guide book

To explain the geology of the Mendips in only 76 pages is a challenge, so chapters are brief but informative (the Charterhouse area gets a good 6 pages). The publications are linked to a website (mendiphills.com) with more information for those who want it. Upper Flood Swallet gets another mention here. The website also gives details of how to take up caving and has links to the major Mendip clubs including a (broken) link to MCG. As with the publication of any guide, the book is already out of date – the map of Charterhouse Cave omits the recent extensions made by the WCC! However it is still excellent value and deserves a place in any caver's library.

New members

At the AGM I asked if anyone would like to handle membership enquiries. I am pleased to say that Jeremy Gilson has volunteered. He will be taking on this important task - responding to membership / group enquiries and acting as a mentor for new members until they become full members. Jeremy will be asking existing members of the MCG for help in taking prospective members underground and in welcoming them into the group.

L Milne

Otter Hole 12/04/08

A civilised 3pm start at the Otter Hole car park. It had been raining the day before and Dan, our leader, was pessimistic about how much we would achieve. This was the first trip of the year so there were lots of still-fresh otter footprints in the crawls before the sump! The eyehole was clear but we had to wait half an hour for the water to drop to allow us through. Brrr! Lots of gurgling noises later it had dropped but the level remained high. Double brrr! Once through we realised we were not going to make it to the Hall of the Thirty so spent a pleasant hour pottering around the cave. Excellent trip. We exited at dusk and didn't hang around the car park – too many dodgy-looking couples for our liking. I need to book another trip to finish the cave off – in lower water conditions.

J Hesketh



Group Headquarters

Nordrach Cottage,
Charterhouse-on-
Mendip, Blagdon,
Bristol BS40 7XW
☎ 01761 462797
[Grid Ref ST51475606](http://www.gridref.co.uk/indeks/ST51475606)



Cottage Bookings All Groups (MCG or Guests) should be booked via Mike Richardson



The Mendip Caving Group (MCG) is a UK registered charity number 270088

MCG News. Published by [MCG](http://www.mcg.org.uk), Nordrach Cottage, Charterhouse, Blagdon, Bristol BS407XW. Original material © 2008 MCG and / or the authors.

Group information

Weekly Meeting	At The Hunters Lodge, Somerset, first Friday of month from 9pm
Monthly Meeting	At the Group HQ usually on the first Fri/Sat/Sunday of the month
On-line Meeting	http://uk.groups.yahoo.com/group/mendip-caving-group/
Group websites	www.m-c-g.org.uk and www.mendipcavinggroup.org.uk
Cottage Fees	per night: MCG members, members' children, SWCC, NPC £ 2.00 per night: Guest clubs and member's guests £ 4.00
Camping Fees	As for Cottage Fees: MCG, SWCC, NPC: £ 2.00. Guests: £ 4.00
Season Ticket	For 12 month's cottage fees - Available to members only £40.00
MCG Subs 2008	Full or Probationary member: £30.00. Associate member: £15.00
BCA Subs 2008	Club Caver £16.00, Club Non-caver £5.00, DIM £pay to BCA

Caving and social calendar 2008

Date	Area	Event	Contact
Jul 4/5/6th	Mendip	Members Weekend	
Jul 5th	Mendip	Upper Flood 40th birthday party	Linda Milne
Aug 1/2/3rd	Mendip	Members Weekend	
Aug 2nd	S Wales	OFD	Bob Templeman
Aug 23-31st	France	Vercors	Bob Templeman
Sep 7/8/9th	Mendip	Members Weekend	
Sep 8th	Mendip	Longwood August System	Peat Bennett
Sep 8th	Mendip	Curry night	JP Burch
Sep 26-28th	Yorks	Hidden Earth	Mike Richardson
Oct 3/4/5th	Mendip	Members Weekend	
Oct 4th	Mendip	St Cuthbert's Swallet	Bob Templeman
Oct 4th	Mendip	Archaeology walk	Yvonne Rowe
Oct 4th	Mendip	Beer and skittles evening	Linda Milne
Nov 7/8/9th	Mendip	Members Weekend	
Nov 8th	Mendip	Pinetree Pot	Bob Templeman
Nov 8/9th	Mendip	Training days (TBC)	Linda Milne
Nov 8th	Mendip	Priddy fireworks	Linda Milne
Dec 5/6/7th	Mendip	Members Weekend	
Dec 6th	Mendip	Eastwater Cavern	Bob Templeman
Dec 6th	Mendip	GB Cave	Bob Templeman
Dec 6th	Mendip	Xmas dinner at cottage	Linda Milne

The 2008 committee

Secretary:	Mike Richardson
Treasurer:	Martin Rowe
Tacklemaster:	Jeremy Gilson
Recorder/Librarian:	Brian Snell
Cottage Warden:	Doug Harris
Editor:	Yvonne Rowe
Caving Secretary:	Bob Templeman
Social Secretary:	Linda Milne

Cottage bookings

For latest updates go to <http://www.caver.plus.com/MCG/>

Group	Day of arrival	Day of departure	Nights	Beds	Rooms
Sub-Brit	Fri 18/07/08	Sun 20/07/08	2	12 tbc	
M. Woods	Wed 24/09/08	Tue 30/09/08	6	14 tbc	
M. Woods	Wed 24/09/08	Tue 30/09/08	6	2 booked	

*Members should co-operate with teachers/ scout leaders with respect to sleeping arrangements